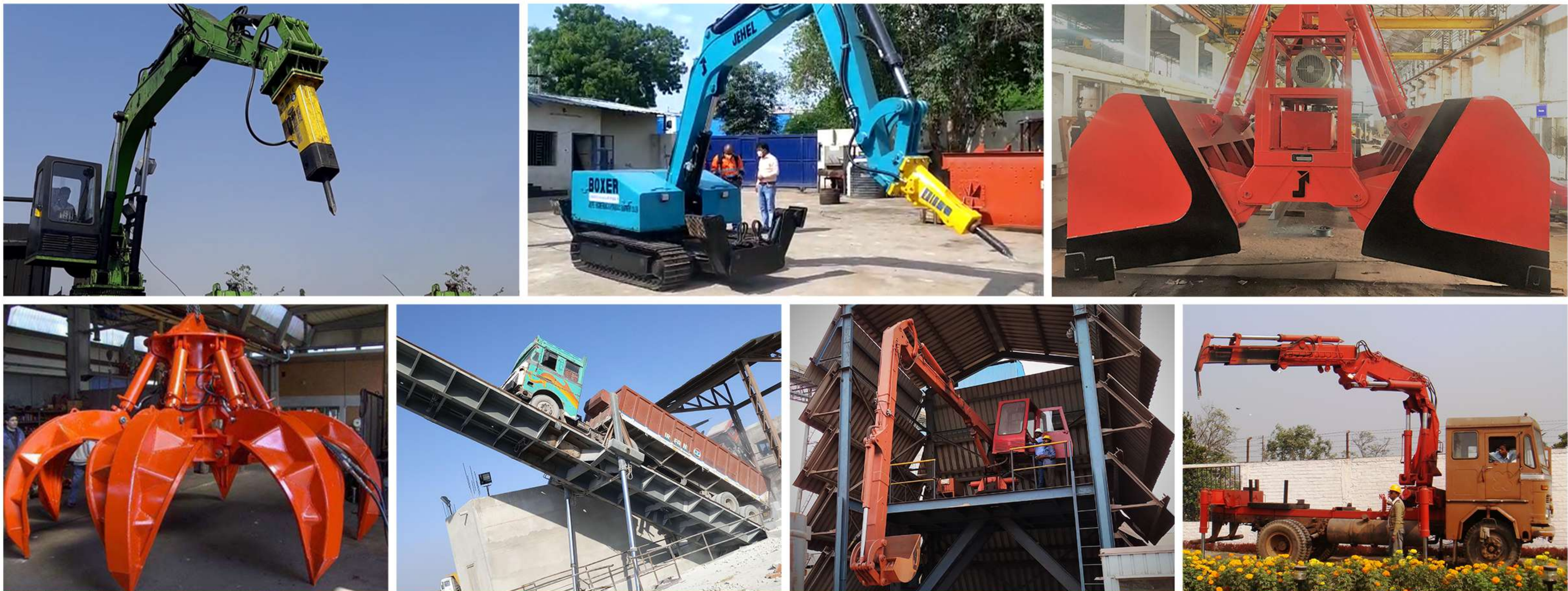




JAYPEE ENGINEERING & HYDRAULIC
EQUIPMENT CO. LTD.
An ISO 9001:2015 Company



JAYPEE ENGINEERING & HYDRAULIC
EQUIPMENT CO. LTD.

30

YEARS OF EXCELLENCE IN
MATERIAL HANDLING SOLUTIONS

DELIVERING HIGH QUALITY HYDRAULIC SOLUTION EVERYTIME



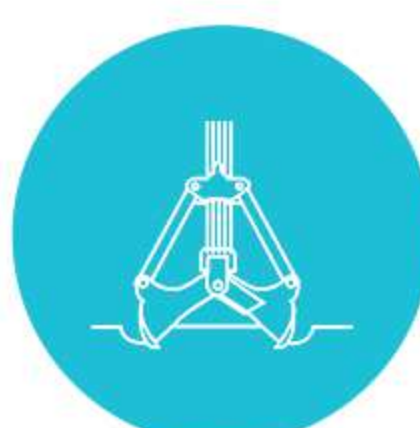
Aerial Access
Work Platform



Rock Breaking
Solution



Truck And
Container
Tilting Solutions



Hydraulic
Grabs



SHEKHAR AGARWAL GROUP OF INDUSTRIES

The principal activities of the Group are metal trading, supply of ready to use forged and machined components and manufacturing of Hydraulic solutions. Currently the group has a total revenue of over **60 Million US Dollars**, with offices and plants in various parts of India. The group is committed to become a leading brand name in the globe in field of metals and engineering.



JEHEL Hydraulics, established in 1995, grounded to the roots of sheer hard work and commitment, we aim to provide a solution for Material Handling Equipment & Rock Breaking systems.

Vishnu Forge industries Limited has two plants in Bangalore, India and is a well known forging and ready to use finished components under IBR-CBB having PED certified products.

United Steel Corporation, Calcutta Forgings & Steel Industries Ltd and Jaypeegee Alloy & Steels Private Limited are our metal trading divisions with offices pan India responsible for supplying of special grade tool and alloy steel.

We, as a Group of Companies, have made our presence felt both on the National and International platform. Our disciplined style of working and dedicated after sales service has made us successfully cater to the needs of various core sector industries, which includes cement industry, sugar industry, steel & sponge iron industry, glass industry, construction industry, Railway industry and other forging sectors etc.

Our Strengths:

- ✓ Inhouse design team technological with excellence in Mechanical, Electrical and Hydraulic design.
- ✓ 1 lac sq. ft covered shop floor equipped with all modern manufacturing facilities
- ✓ R&D team with modern 3-D analysis softwares for VA/VE
- ✓ International Quality cylinders manufacturing
- ✓ Comprehensive quality assurance approach Confirming to international standards
- ✓ Providing high quality technical products at an economical cost.
- ✓ Experienced service team of 25 members catering India & abroad

Vision:

- ✓ To be a Leader in Providing High Quality Hydraulic Solutions & Services Worldwide



JAYPEE ENGINEERING & HYDRAULIC
EQUIPMENT CO. LTD.

An ISO 9001:2015 Company

JEHEL Products

Pedestal Rock Breakers

Ranging from 4m to 12.5m boom length

Mini Mobile Excavators

Boxer-10, Boxer 35 and Boxer 50

Material Handling Grabs

Ranging from 1 cuM to 8cuM grab closed volume

Scraper & Cullet Unloader

Ranging from 5m to 11m of boom length

Hydraulic Truck And Container Unloader

Ranging from 40MT to 100MT gross unloading capacity

Accretion Demolition Machine

JPROK10, JPROK35 and JPROK50

Hydraulic Truck Mounted Cranes

capacity ranging from 6 Ton meters to 22 Ton meters

Pedestal AFR Handler

Ranging from 5m to 9.5m boom length

Hydraulic Cylinders And Power Packs

Customized specification

We Provide Customized Solutions

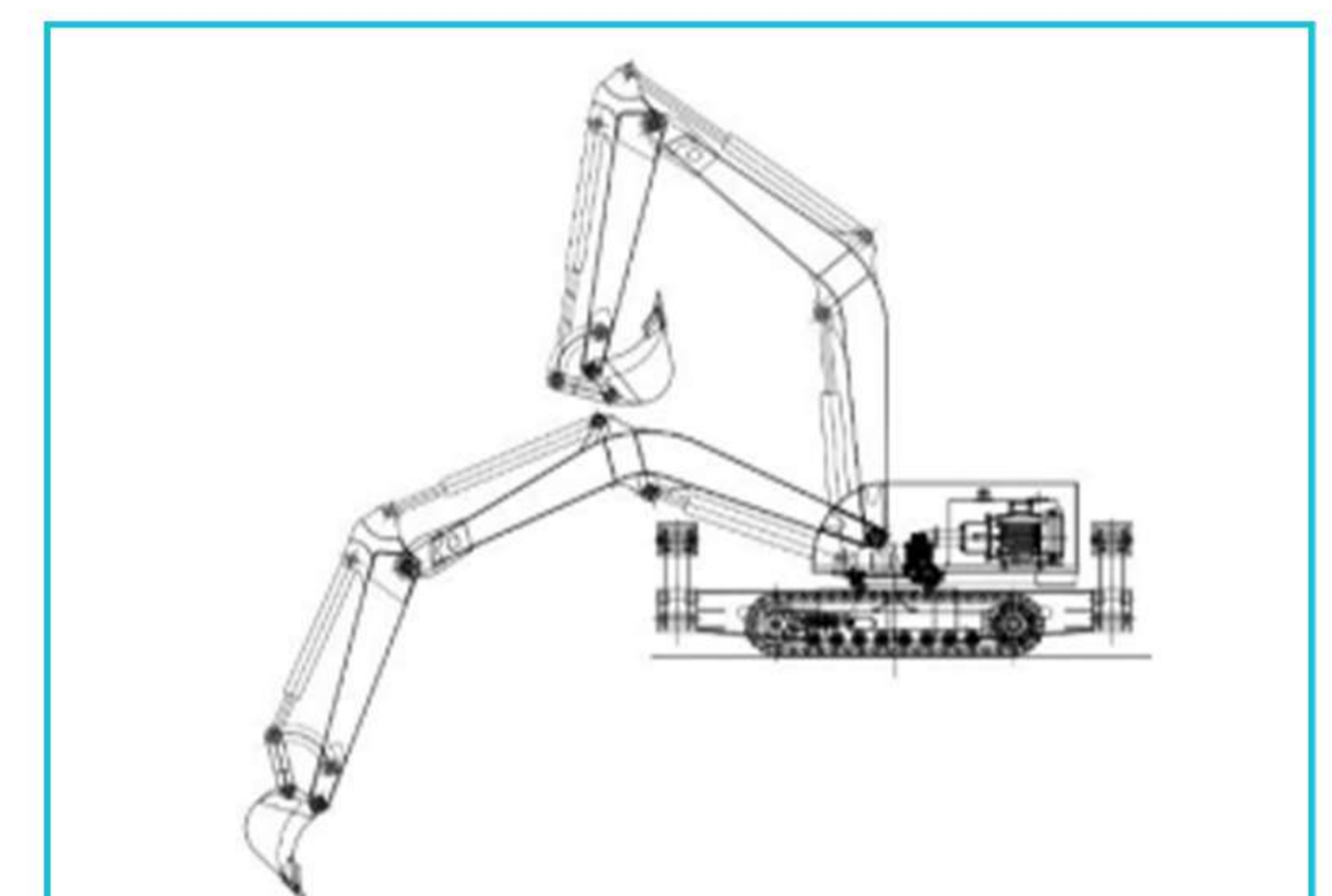
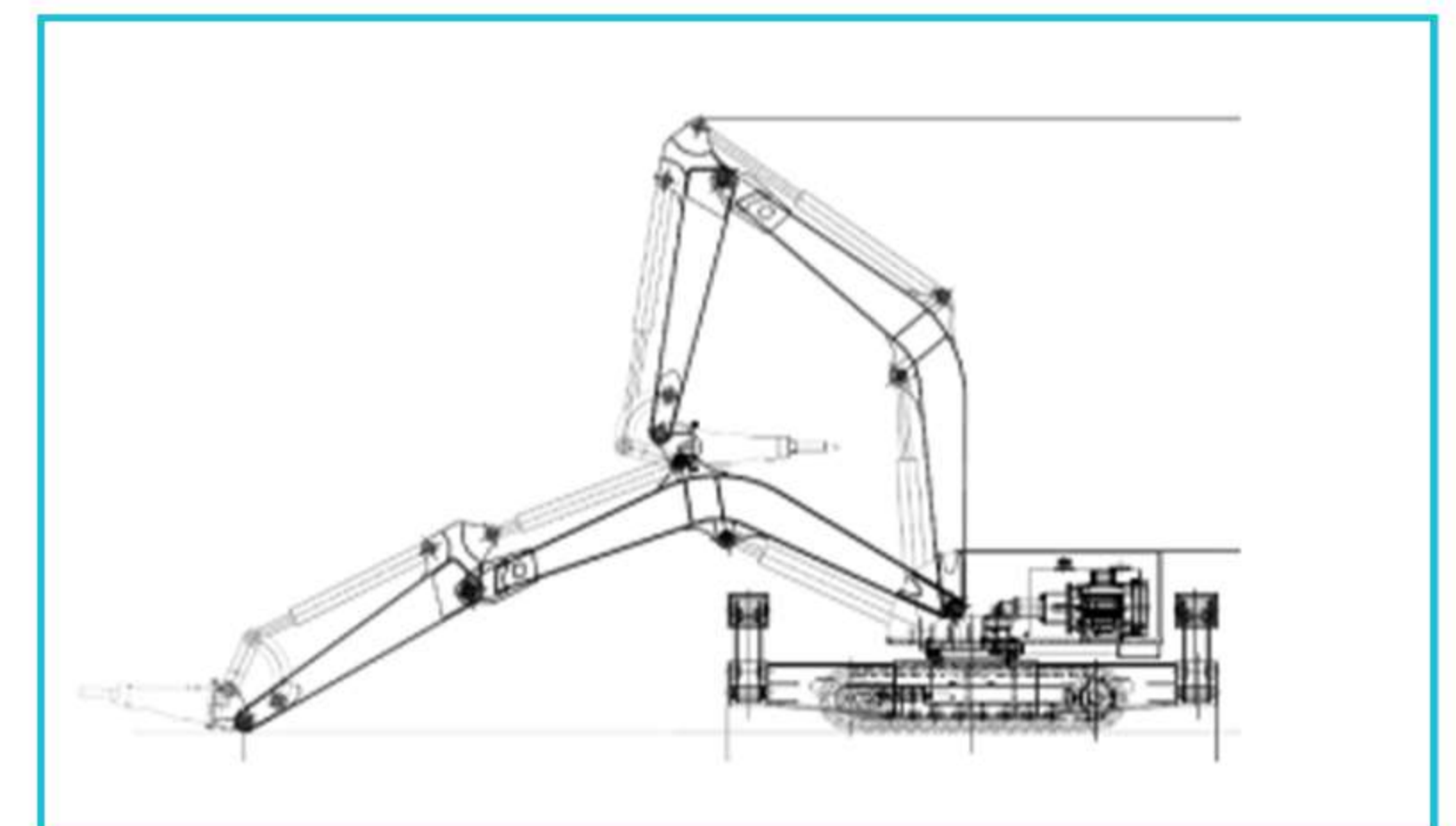


Mini Mobile Breaker And Excavator



Mini Mobile Excavator has versatile Application in different industries as follow:

- ✓ The mini excavator is compact in design, has flexible arm system, which makes it suitable for dynamic operation.
- ✓ **Mining Industry:**
Suitable for breaking lumps of rocks in mining.
- ✓ **Cement Industry:**
Effective utilization for de-bricking in cement kilns.
- ✓ **Metal Processing:**
Cleaning deposited accretion and de-bricking in furnace, ladles, runners and torpedo cars.
- ✓ **Sponge Iron:**
Demolition of Accretion in 350 and 500TPD kilns.
- ✓ **Construction Industry:**
Demolition of old concrete structure and removal of debris in congested areas.
- ✓ **Tunelling:**
Tunnelling with auger attachment.
- ✓ **Underground Digging:**
In a narrow vein mine can be with bucket attachment





Stationary Rock Breaker



Description:

A pedestal-mounted Rock Breaker System is a stationary unit, mounted over the grizzly, operated electrically to break and rake oversized boulders or lumps of coal dumped on the grizzly. It ensures that the crushers are fed with the appropriate size of the feed. These rock breaker systems prevent the unnecessary stopping of the crusher owing to the jamming of large boulders and lumps of coal in both underground and open pit mines, coal handling plants and offer high quality, high productivity and immense robustness.

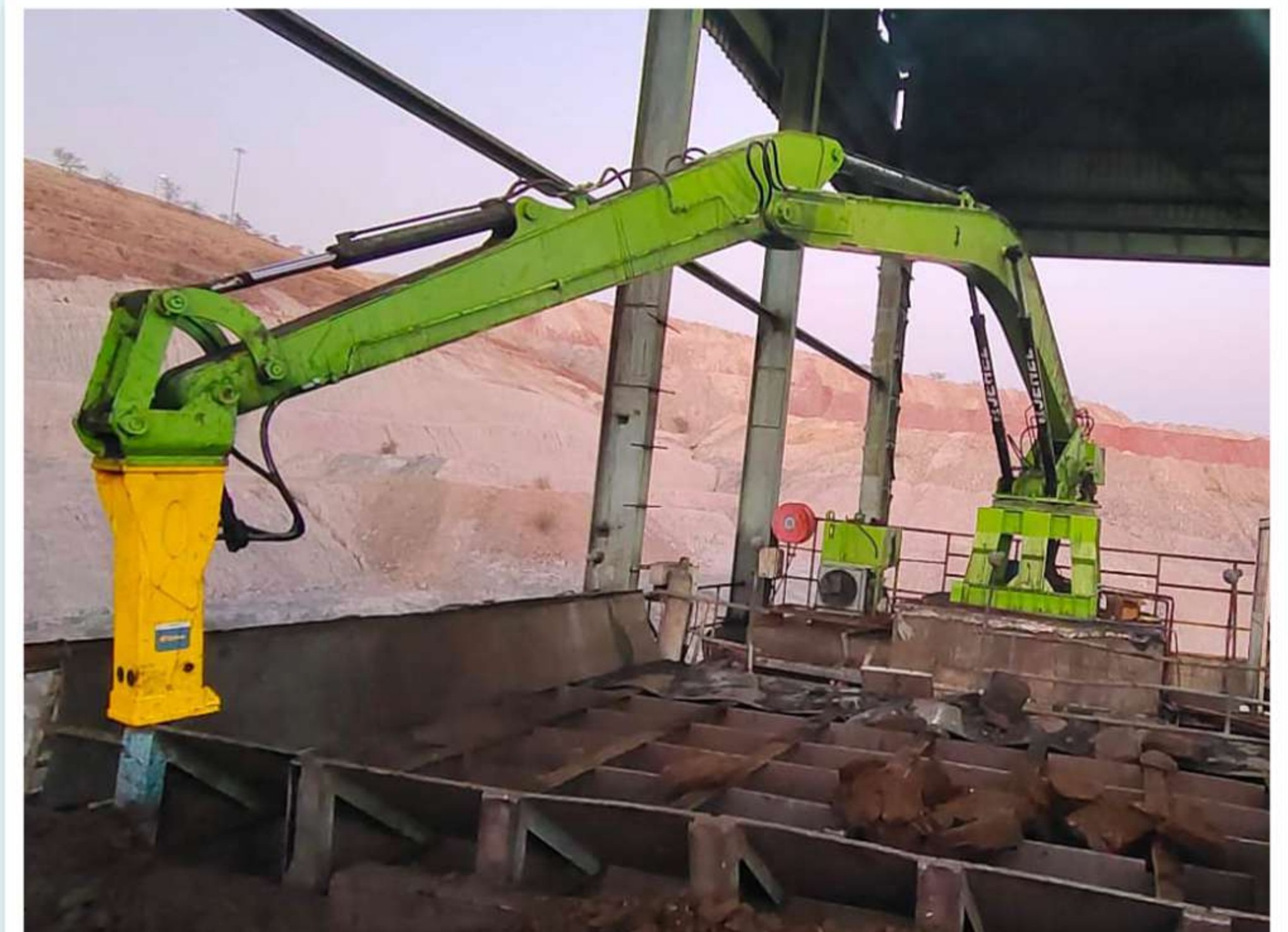
Application:

This equipment is suitable for breaking lumps of coal, lime stone, iron ore etc in thermal power plants, cement industries, mines, coal handling plants etc.

Technical Specification:

This model has a standard boom outreach. however it can be customized to suit different grizzly size. Different breakers can be selected and attached to the equipment for different applications.

Control: Wireless Radio Remote control/ Joystick control from top seat Ac Cabin.



SRB Can be customized according to the material Bulk Density as per the customers' requirements.

Presently we are manufacturing the below models having boom reach from 4meters to 12.5 meters.

MODELS

SRB 4	SRB 5.5	SRB 6.5	SRB 7.5	SRB 8.5	SRB 9.5	SRB 10.5	SRB 12.5
-------	---------	---------	---------	---------	---------	----------	----------





**JAYPEE ENGINEERING & HYDRAULIC
EQUIPMENT CO. LTD.**

An ISO 9001:2015 Company

Material Handling Hydraulic Grabs



Description:

Electro-Hydraulically operated grab, used for handling a wide range of loose materials like coal, rock, iron ores, gypsum, fly ash, logs, mill scale as well metal scrap handling, alternate fuel handling and waste recycling industry. etc. These hydraulic grabs has a lot of benefits over mechanical grabs

Application:

Widely used in steel plants, sponge iron plants, thermal power plants, cement plants.

Technical Specification:

Clam Shell Grab Capacity ranging from 1 Cu meter to 8 Cu meters with options to mount on EOT cranes, Gantry cranes, mobile cranes and stationary base mounted cranes. Orange Peel Grab ranges from 0.3 CuM to 2.5CuM.

Description:

Electro-Hydraulically operated grab used for handling scrap in the aluminum and steel industry. It is the most efficient way to handle scrap in scrap yards.

Application:

Widely used in steel plants, aluminum plants, alternate fuel handling and waste recycling industry.

Technical Specification:

Capacity ranging from 0.3 Cu meters to 1.5 Cu meters with options to mount on EOT cranes, Gantry cranes, mobile cranes and stationary base mounted cranes. We customize our equipment as per the site condition and customer requirement. Our Grabs are designed for its high strength, low empty weight and are guaranteed to achieve high returns on investment and save valuable time.



**We can also manufacture REMOTE CONTROL operated
(As per customer requirement).**

Our Grabs are designed for its high strength, low empty weight and are guaranteed to achieve high returns on investment and save valuable time.





Hydraulic Truck And Container Unloader



Description:

Hydraulically operated unloading platform, where the platform tilts up to at an angle of 55 degrees to unload materials from conventional trucks and containers. It is the fastest method to unload trucks, trailers & containers.

Application:

HTU is widely used in all industries where materials are unloaded manually from trucks.

Technical Specification:

This model comes in different variants namely Mark II and Mark III (Ramp Saver) with capacity ranging from 40 to 100 tons with customized platform size. To accommodate various models of trucks and trailers



Presently we are manufacturing different models of Hydraulic Truck Tippler of capacities:

40 Ton

50 Ton

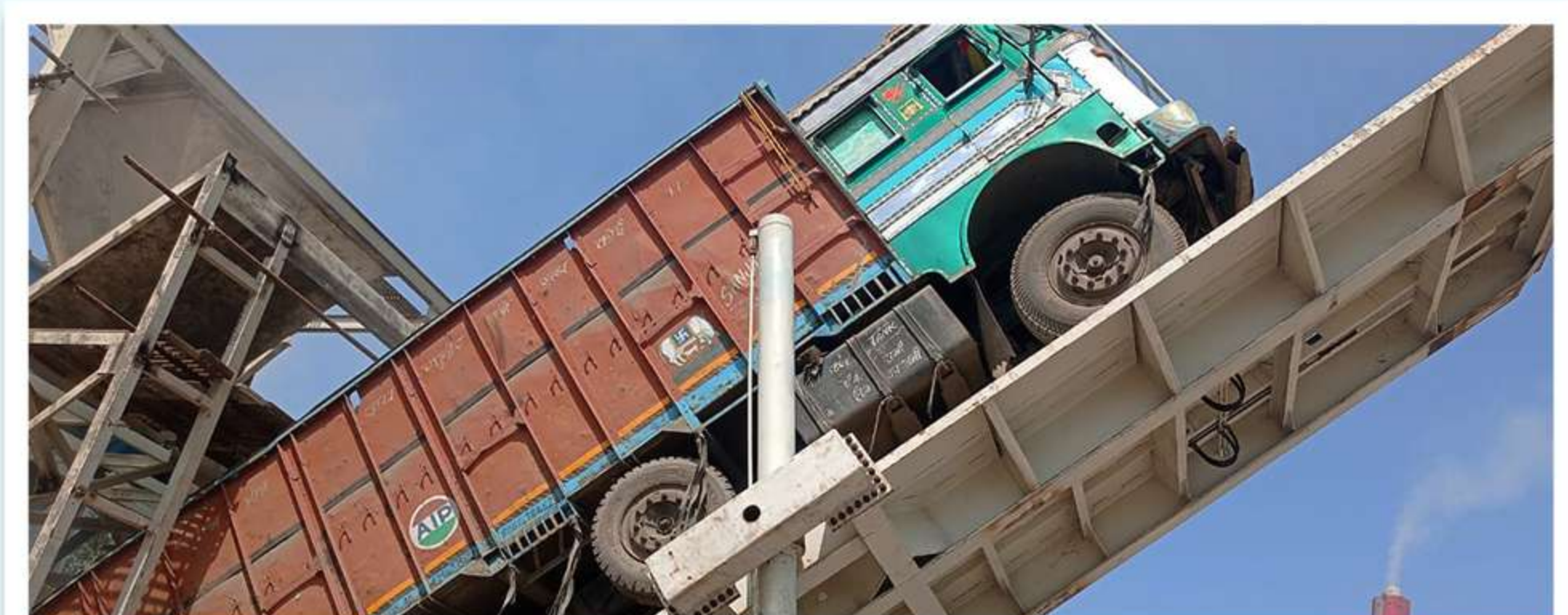
60 Ton

70 Ton

80 Ton

100 Ton

Please note that the above information is indicative only. We customize our equipment as per the site condition and actual customer requirement.





Hydraulic Truck Unloader With Drive Through Mechanism



Technical Specification

This is a typical arrangement of truck unloading where the reversal of the truck is eliminated as the truck move over the hopper/BRU through a Drive over Door and positioned over the tilting platform which tilts and unload the material and the truck moves out to the same direction. This is the most suitable model for many industries at present.

Advantages Of Drive Through Model

The trucks need not reverse while placing into the truck tippler. It moves straight over the hopper and gets placed on the truck tippler.

Presently we are manufacturing different models of Hydraulic Truck tippler of capacities:

40 Ton

50 Ton

60 Ton

70 Ton

80 Ton

100 Ton





Stationary Hydraulic Scrapper



Description:

Hydraulically operated Scraper and Cullet Unloader specialises in unloading sticky materials like Gypsum, Wet fly ash, wet coal, broken glass of assorted size and shape. It offers safety and efficiency and reduces the cost of unloading compared to manual unloading. Offers you High Return on Investment.

Application:

Widely used in Cement, Paper and Glass Industries for unloading raw material.

Technical Specification:

This model has a standard boom outreach from 6.6 meters to 11 meters. Scrapers can be mounted on a stationary base frame or on a truck chassis.



JEHEL Hydraulic AFR Handling Crane

These are used for handling of structural scrap, mixed scrap, scrap pellets, packets, cast iron, stones, rocks, crushed chips, biomass, chips, cut-up tyres, industrial waste, urban waste and Municipal Solid Waste (MSW).

Salient Features:

- ✓ The stationary crane is pedestal mounted and is made from High Strength Steel.
- ✓ Boom length can be customized from 5 meters to 10 meter.
- ✓ Radio -Remote control operation
- ✓ Only branded components are used in control panel and powerpack ensuring long life.
- ✓ Hydraulic cylinders are the heart of the equipment are made from internationally honed ST-52 standard tubes with 30-35 micron chrome plating.



JAYPEE ENGINEERING & HYDRAULIC
EQUIPMENT CO. LTD.

An ISO 9001:2015 Company

Hydraulic Truck Mounted Crane



Description:

Hydraulic operated cranes mounted on the front or rear end of a truck which can be used for versatile applications and comes with options to attach a varied type of attachments such as grabs, hooks and winch.

Application:

All industries where a mobile material handling solution is required such as logistics, construction companies and paper industry.

Technical Specification:

This Equipment comes with a standard capacity ranging from 6 Ton meters to 22 Ton meters and can be customized to mount on different truck chassis.





JAYPEE ENGINEERING & HYDRAULIC
EQUIPMENT CO. LTD.

An ISO 9001:2015 Company

JEHEL Experience

✓ Providing Prompt Service Support & Spares:

We have a professional team of **25** service engineer who are completely mobile, visiting sites from time to time to provide world class service support for our equipment.

✓ In-house R&D Team and Design Expertise:

All the design is being done in-house at JEHEL. We have enough capabilities for mechanical, electrical and hydraulic design.

✓ Dynamic 3D Analysing Tools for Value Engineering:

Our Team is equipped **Engineering simulation software** like Ansys which ensures reliability and safety.

✓ Strong Quality Policy and Conforming to International Standards:

Quality is a commitment in our blood for us which results in high customer satisfaction and repeat orders.

✓ World Class Manufacturing Facility:

We have 1 lac sq. ft of state-of-the-art manufacturing facility equipped with all modern machines.

Major Customers

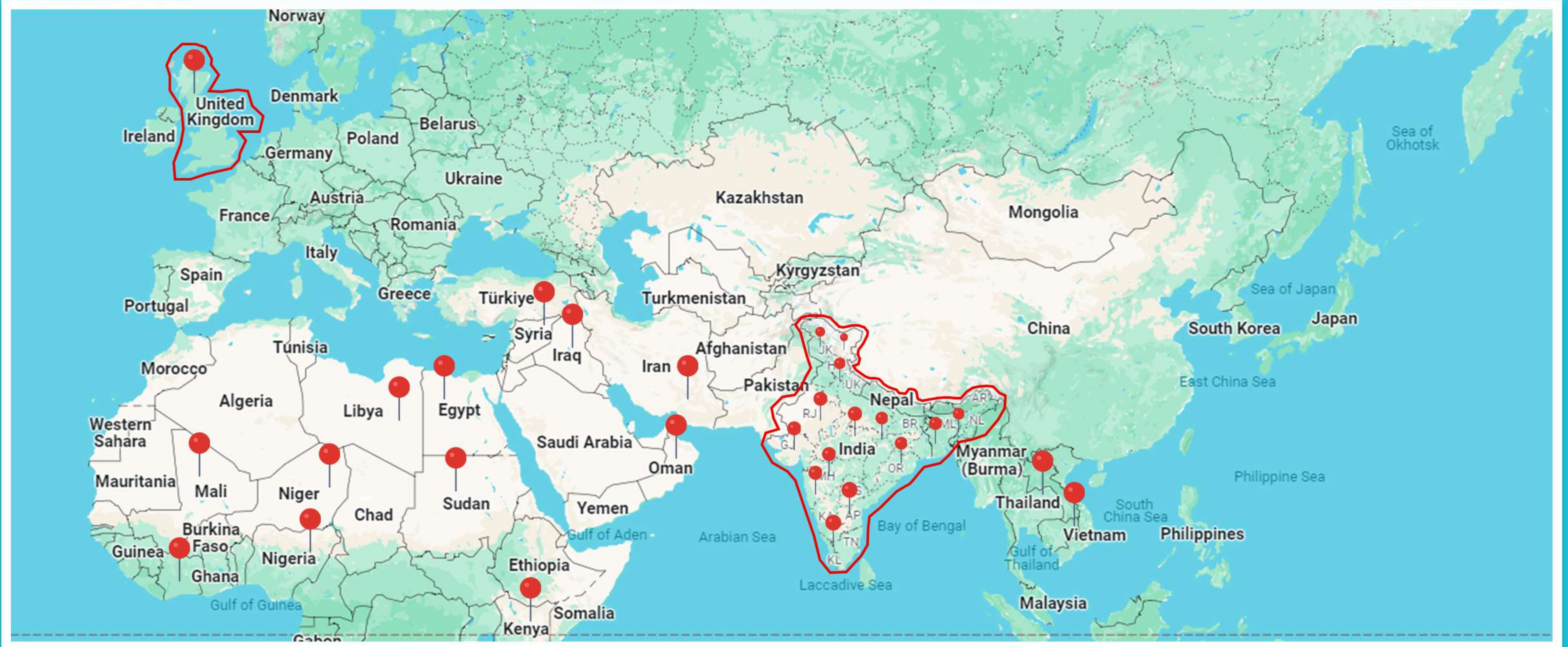




**JAYPEE ENGINEERING & HYDRAULIC
EQUIPMENT CO. LTD.**

An ISO 9001:2015 Company

Our Worldwide Presence



Website



YouTube



LinkedIn



Download
Brochure



**JAYPEE ENGINEERING & HYDRAULIC
EQUIPMENT CO. LTD.**

An ISO 9001:2015 Company

Contact Us At



+ 91 9051617609



info@jehel.com



www.jehel.com



Head Office:

**Jaypee Engineering & Hydraulic
Equipment Company Limited**

24, Strand Road, Kolkata - 700001,
West Bengal, India.



Works:

**Jaypee Engineering & Hydraulic
Equipment Company Limited**

Chandannagar (Memonpur), Budge
Budge Trunk Road, Maheshtala,
Kolkata-700139, India